



We provide our customers with exceptional **PRODUCTS** in accordance with the highest international standards and also provide **SERVICES** that meets our customers' needs or exceed their expectations.

Powered by: **PROLINK**

Description

PROLINK CAT6A SHIELDED PATCH CORD
W/ T568B WIRING, 1M, LSZH **White**

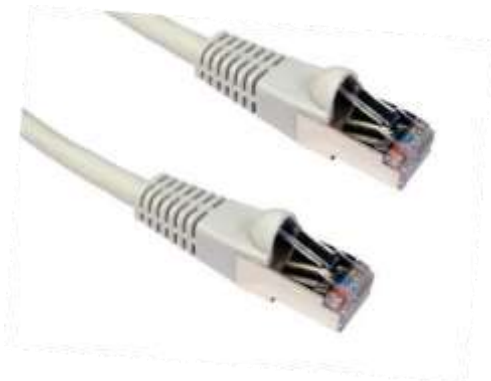
CAT.6A S/FTP Patch Cords

PROLINK Cat.6A S/FTP patch cords are used for connecting the network equipment to patch panels and telecommunications outlets.

They are suitable for frequencies of up to 650 MHz

Features of CAT.6A S/FTP

- Full the requirements of Category 6A S/FTP, Class E (650MHz) according to the present standard of the ISO/IEC 11801.
- Each individual patch cord is tested and marked with a quality stamp.
- Can also use as Cat5e or Cat6 (backward compatible).
- Strain relief is provided with wide function.
- Labeling possible on the strain relief or on the color-coding.
- 1M, 3M, 5M or 10M length.
- The impedance of 100 ohms.
- LSZH version.
- Die rent Colors (Blue – White – Gray – Yellow – Black – Orange).



Materials

Plug Housing	Contacts	Contact Plating	Shielding
Polycarbonate	Phosphor bronze (CuSn6)	0,7 µm selective gold plate	Tin-plated brass

Electrical Characteristics

Current Rating	Voltage Rating	Dielectric Withstanding Voltage	Insulation Resistance
1,5A (maximum @ 25°C)	150 VAC (maximum)	1000 VAC, 1 min (60 Hz)	650 MO (minimum)

Mechanical Characteristics

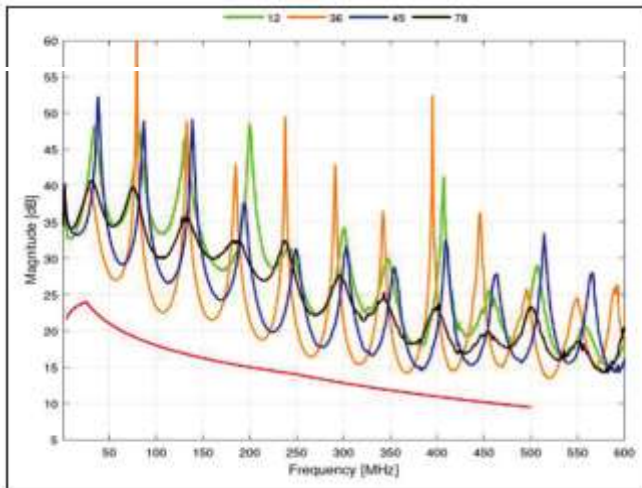
Environmental Characteristics

Plug Housing	Contact Plating
1,5A (maximum @ 25°C)	150 VAC (maximum)
Compliant IEC 60603-7	-10°C to -60°C

Patch Cord Characteristics CAT.6A S/FTP

S/FTP	
Inner Conductor Diameter	AWG26/7
Number Of Pairs	4
Screen 1 Pair	Non
Outer screen	Non
Jacket	LSZH
Outer Diameter	Max. 6.5 mm

Typical Return Loss CAT.6A S/FTP patch cord



Typical NEXT CAT.6A S/FTP patch cord

